

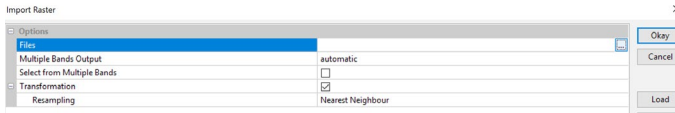
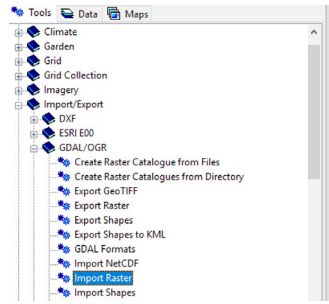
GIS | SAGA GIS

Raster Data & Terrain Analysis

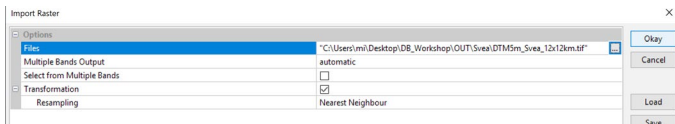
01 | Import Raster

>>> go to the 'Tools-Tab' expand the menu to >>> **Import/Export >>> GDAL/OGR >>> Import Raster**

double click >>> a window should open >>> Select next to File in the Field the 3 Points >>>

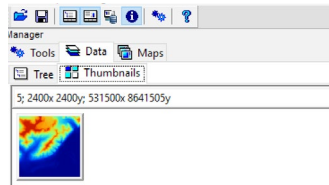


>>> browse to the file location
>>> select **GeoTIFF (or other Raster Formats)** >>>



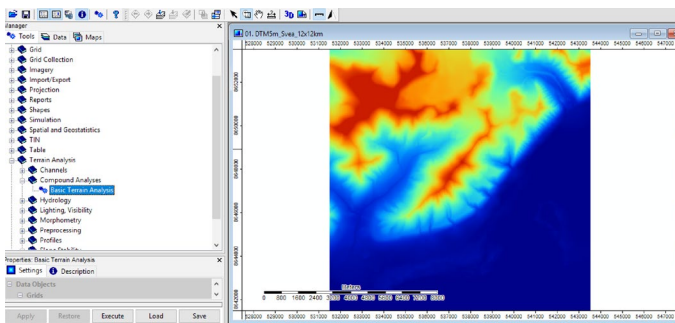
when the file is referenced, leave the Resampling Transformation on 'Nearest Neighbour' >>> confirm and run 'Module'

>>> the imported Raster should show in the Data-Tab >>> 5; 2400x 2400y; 531500x 8641505y >>> 5=Cellsiz; rows in x cols in y; Originx Origny

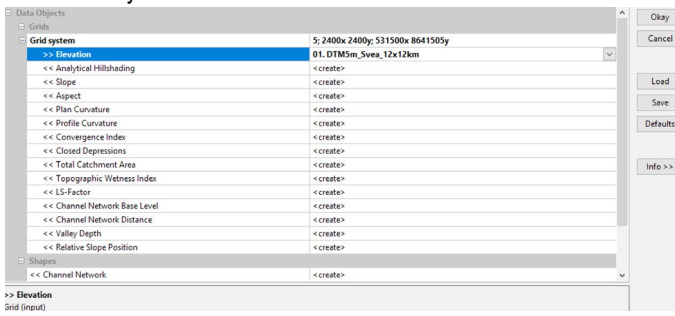


>>> by double clicking on the elevation Grid you can add the data to your Map >>> if you switch to the 'Maps-Tab' you can view and arrange your Layers

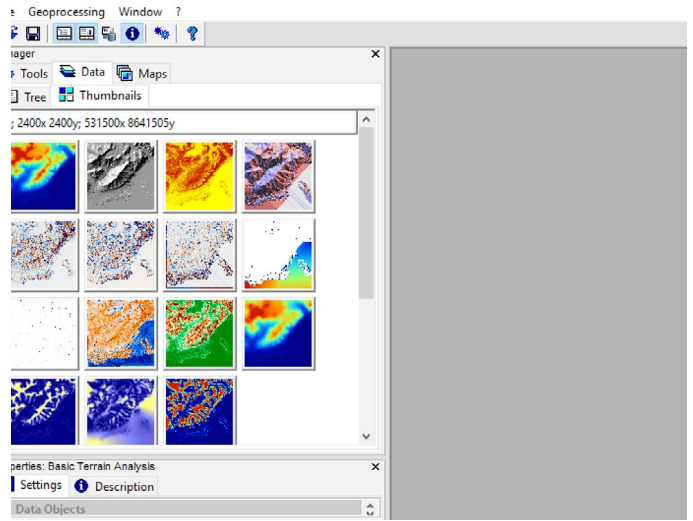
02 | Run Basic Terrain Analysis | switch back to the Tools-Tab and go to >>> **Terrain Analysis >>> Compound Analysis >>> Basic Terrain Analysis**



select Grid system and Elevation >>> confirm



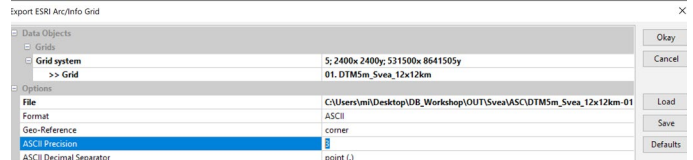
>>> once the process is finished you can view the Data if you switch to the Data-Tab (note: you can switch from Tree to Thumbnails if you want to see a preview of the data)



03 | Export Raster .ASC go to the 'Tools-Tab' expand the menu to >>> **Import/Export >>> Grids >>> Export ESRI Arc/Info Grid**

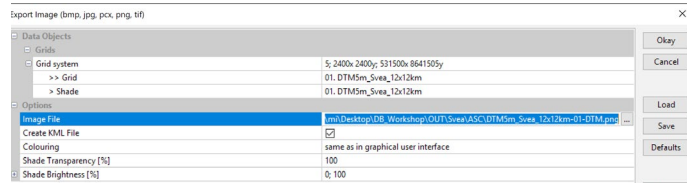


Select >>> **Grid System >>> Elevation >>> Filepath >>>** note: you can change on the ASCII Precision to 3 (values are here in meters 3 means e.g.: 703,786 m -> means the precision is still 1 mm -> you could even choose 0 on a larger Terrain model) >>> confirm and run the Module



the .asc file should be in your Database -> check in your File-Browser on your local disk.

04 | Export Raster .PNG go to the 'Tools-Tab' expand the menu to >>> **Import/Export >>> Images >>> Export Image (bmp, jpg, pcx, png, tif)**



select 100 % on the Shade Transparency >>> confirm >>> the .png with a .kml referencing file should be written into your Database

